

Domestic Assistant – Grade 3

Job purpose

To carry out cleaning duties and some physical care tasks for people with physical, visual or hearing difficulties under the direction of the Manager or senior staff member on duty.

This role is based within Adults & Health. Find out more about [working for Kirklees](#).

Key areas of responsibility

Following the direction of senior staff, carry out delegated tasks to maintain the building fabric, furniture and fittings in a clean and hygienic condition.

Duties in kitchen and dining room such as assistance in meal preparation, washing up, laying and clearing tables etc.

Operation of powered equipment, e.g. vacuum cleaners, floor polishers etc.

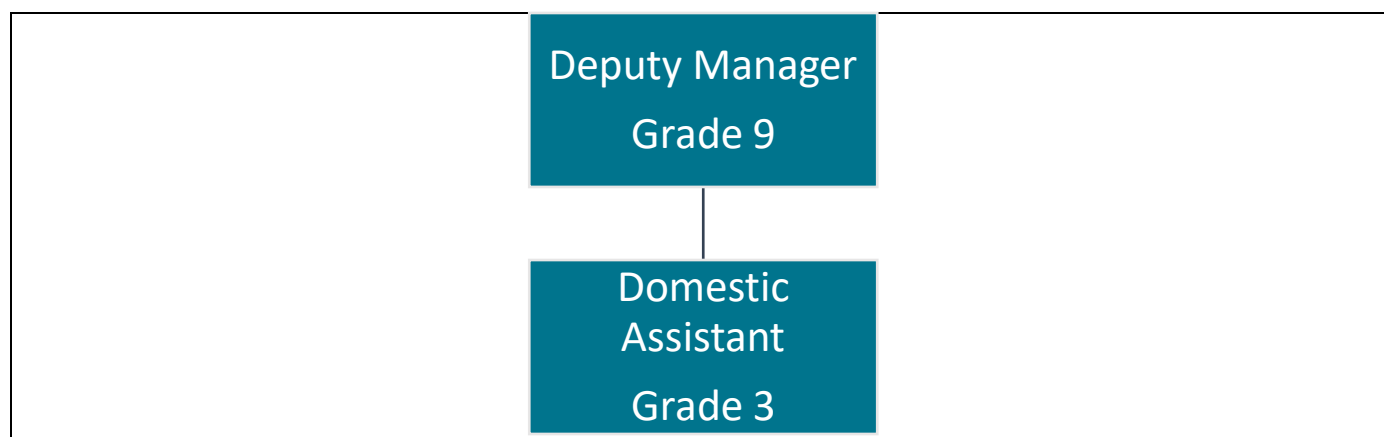
As instructed by the senior member of staff, carry out care duties in a responsive manner appropriate to the individual needs of the service user. These will include washing and bathing, care of clothing, toileting etc.

You will be working with potentially heavy/bulky equipment and supplies, as well as working with service users who may have restricted mobility and/or challenging behavior. As part of your role you will be required to undertake Movement and Handling training to help you assess and reduce risks to yourself, colleagues and service users.

Report any incidents and difficulties to senior staff.

Attend staff meetings, training sessions, etc. as required.

Position of job in organisational structure



Employee Specification

Knowledge, qualifications, skills and experience	Shortlisting criteria
An understanding of the differing physical and emotional needs pertaining to the specific user group.	Essential
Ability to demonstrate an organised approach to domestic tasks.	Essential
Ability to demonstrate literacy skills to read and follow instructions.	Essential
Understanding of practical hygiene issues and health and safety issues relating to the kitchen environment and other areas.	Essential
Understanding of equality issues and how they relate to service delivery.	Essential
Ability to operate basic equipment safely	Essential
Ability to participate in handicrafts and leisure activities and encourage residents' involvement.	Essential
Possession of NVQ2 in care or willing to undergo this training.	Essential
Willingness to continue further training and personal development.	Essential
Ability to work flexibly; working shifts including evenings, weekends and public holidays.	Essential
You will be working with potentially heavy/bulky equipment and supplies, as well as working with service users who may have restricted mobility and/or challenging behaviour. Following an offer of appointment, you will be required to undertake a standard medical screening and any other medical screening as determined by the Occupational Health Unit appropriate to occupational risk	Essential
Accepts an enhanced DBS and barred list check is required. Please note that a conviction may not exclude candidates from appointment but will be considered as part of the recruitment process.	Essential

Behaviours and expectations

The right behaviours and attitudes are as important to us as the skills you bring to the job. We expect all our employees to demonstrate the following behaviours:

- Positive
- Honest
- Respectful
- Flexible
- Communicative
- Supportive

You will also promote and be a role model of the Council's expectations of a New Council

Employee within the organisation. This role is at level 1. Find out more about [Council Behaviours and Expectations](#).

General information

See your responsibilities related to [Safeguarding](#).

Driving licence or able to travel independently across Kirklees, exceptions maybe made for disabled candidates.

DBS check at the appropriate level

This Job Profile is intended to provide an understanding and appreciation of the responsibilities of this particular job. It is not possible to specify every detail and we expect you to work flexibly within your skills, knowledge, experience and grade of this job.

For Office Use Only:

Job Category	Residential Care	Grading ID	21780
Job ID	80100489	Last Updated	April 2020
Job Focus	No	Career Progression	No

Contractual Variants

DBS Category	Adults + Children	DBS Type	Enhanced + Barred
Health Check	Yes	Politically Restricted	No
24/7 working	No	Public Holidays	Yes
Night Working	No	Rotating Shift	Yes
Standby	No	Other	No