



# Early Support Consultant, Connected Persons Support Team – Grade 10

## Job Focus

**To be read in conjunction with the Early Support Consultant Job Profile which provides the full range of responsibilities.**

Early Support in Kirklees is underpinned by a culture of restorative practice with high quality relationships at the heart of our approach. We will ensure that you have high-quality professional development and receive high standards of induction, supervision, and management.

With the refresh of the national *Troubled Families* programme into the *Supporting Families* initiative in April 2021 come new opportunities for growth and professional development within our Early Support Service. We wish to build upon our existing network of Early Support Consultants across Kirklees to support us in responding to the refreshed initiatives as set out in the latest Spending Review.

One of the core principles of the refreshed programme is the *Whole Family* approach. This approach aims to help children and young people by giving support to their whole family: it's about seeing the bigger picture when helping an individual child. The Early Support Service are working to embed the Whole Family approach into the work of all our partners and council services.

We are looking for a highly motivated individual with experience of supporting Kinship families to work within the Connected Persons Support Team and with a wide range of partners to support positive outcomes for children and families.

## Role Description

You will work within the Connected Persons Support Team and with partners to embed the Whole Family approach into their way of working, ensuring the planning and provision of our support to Kinship children and families is as effective as possible. To achieve this, you will need to be an experienced early support practitioner who understands the needs of Kinship families.

The restorative approach underpins our work. As well as following the restorative approach, you will use coaching, consultation, and co-working skills to build relationships with partners, working in a collaborative way to ensure positive outcomes for children and families.

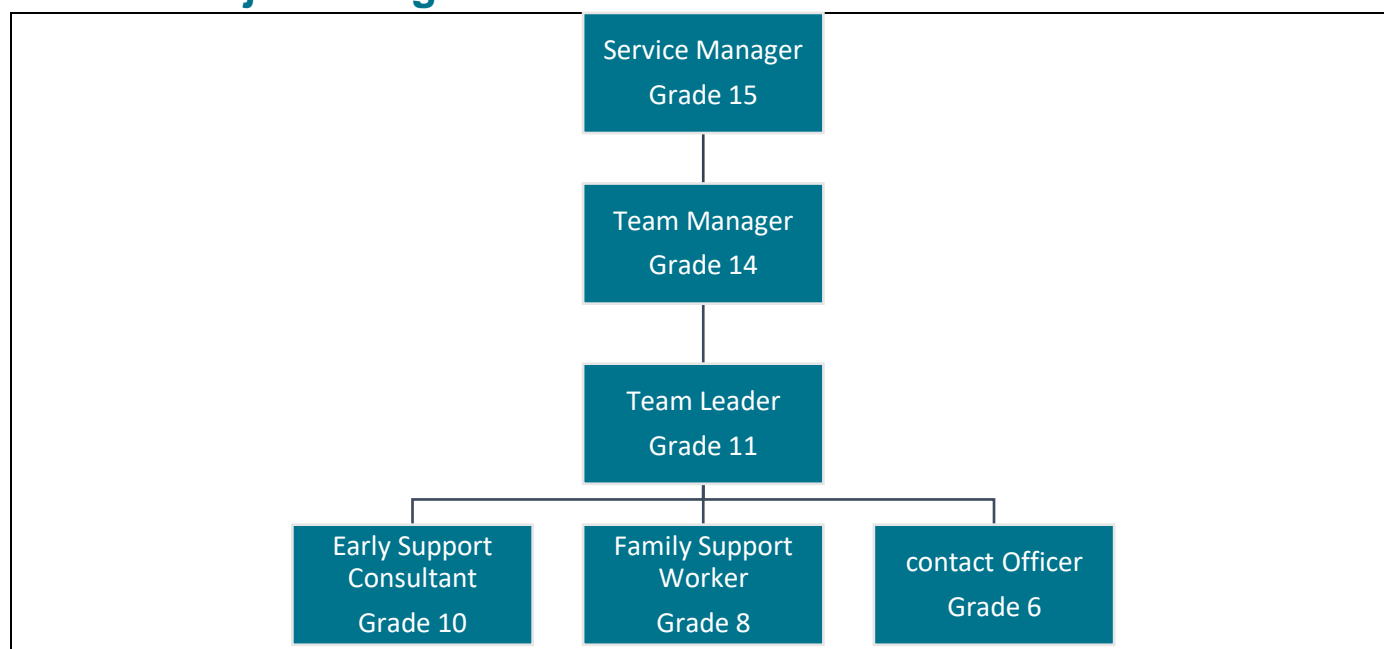
You will work to support children's services to reduce the need for statutory intervention by encouraging early support partners to work in a Whole Family way, building on family strengths and making the most of community and universal resources.

As an Early Support Consultant, you will ensure the delivery of high-quality service provision that promotes and improves the well-being of children and young people and their connected carers.

You will have a good understanding of the regulatory framework applicable to Special Guardianship Orders as well as experience of working with children and families. You will have:

- Experience of working directly with children, young people and families and can demonstrate a good knowledge of the challenges carers can face
- Experience of leading and developing groups, interventions, and universal services for Kinship families
- Knowledge of the Adoption Support Fund and how this can be accessed and utilised to support Kinship families.
- Understanding of the local, regional, and national support networks for Kinship families.
- Ability to provide support, advice, and guidance to partners in relation to supporting Kinship families.

## Position of job in organisational structure



## For Office Use Only:

Job Category	Children Services	Grading ID	66910
Job ID	80102960	Last Updated	June 2020
Job Focus	Yes	Career Progression	No

## Contractual Variants

DBS Category	Adults & Children	DBS Type	Enhanced
Health Check	No	Politically Restricted	No
24/7 working	No	Public Holidays	No
Night Working	No	Alternating Pattern	No
Standby	No	Other	No
Checked by HR	M Lunn		