

Arborist – Grade 7

Job purpose

The Council's Forestry Section is responsible for the management of trees on the Council's land. This includes street trees, Council house gardens, schools, parks, and woodlands. The duty on the Council under Health and Safety legislation is to protect the safety of the public and part of this duty is discharged by both proactive and reactive management of its tree stock through Arboriculture practices such as felling, pruning and crown lifting and thinning.

The primary role of the Arborist is always to undertake these works on behalf of the council working in a professional and safe manner and to ensure that all works are undertaken without risk to the public.

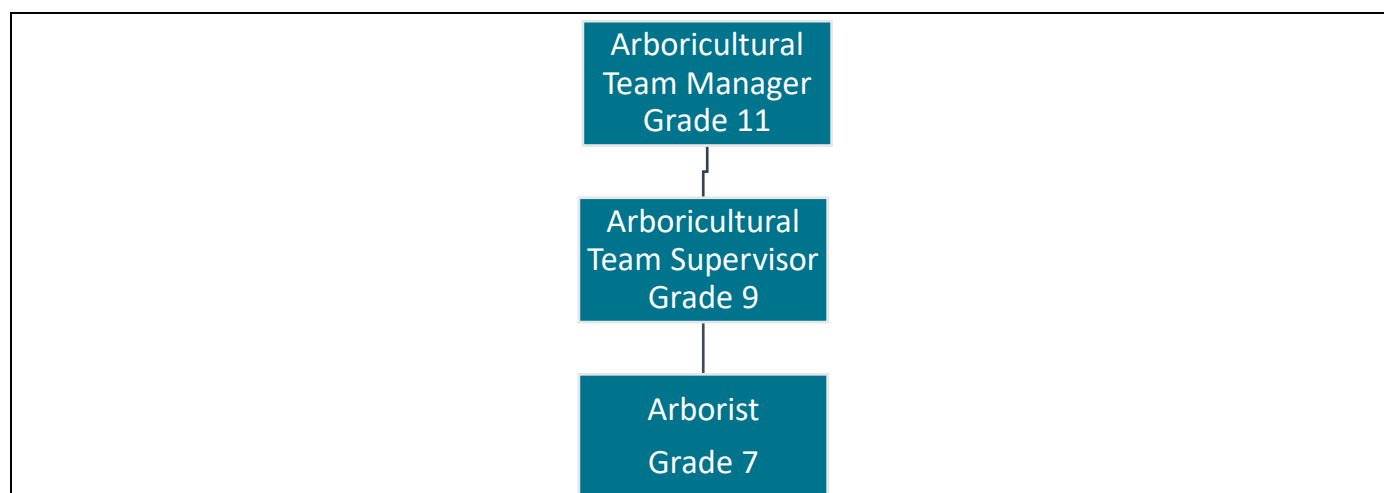
This role is based within [Environment and Climate Change](#). Find out more about [working for Kirklees](#).

Key areas of responsibility

- The undertaking of tree surgery work, including planting, felling, sectional dismantling, pruning, crown lifting and thinning, reductions using appropriate climbing techniques by means of ropes and harnesses and associated equipment where necessary.
- The safe use and maintenance of appropriate machinery, tools, and equipment – including personal protective equipment, and to be fully conversant with the manufacturer's guidelines for its operation and maintenance.
- The operation of Forestry vehicles, plant and associated equipment including various woodchippers and stump grinding machinery and to include maintenance as appropriate.
- The completion of documentation required to enable the administration of the department to function in respect of providing an audit trail for all works undertaken and to ensure the monitoring of the correct use of resources.
- Ensure duties are conducted in line with Health and safety expectations to ensure a safe environment for employees, service users and members of the public
- Ensuring equipment works efficiently, effectively and within vibration limits, report faults and repairs promptly.
- Ensure arrangements for security are being followed.
- Communicate appropriately with customers, staff and other stakeholders

- Where required, provide on the job guidance and training to less experienced members of staff, for example Apprentices, including instruction on tasks and checking.
- Contribute to the improvement of services provided through review of working practices and procedures and effective work/scheme management.
- You will be expected to undertake standby duties working evenings and weekends on a rota basis.
- You need to ensure you attain and retain appropriate certificates relative to the training receive and the post and ensure that all such certificates are up to date and valid for the operations being carried out.

Position of job in organisational structure



Employee Specification

Knowledge, qualifications, skills and experience	Shortlisting criteria
Recognised qualifications/operators' certificates within Forestry or Arboriculture and the ability to demonstrate good practical knowledge and experience in Arboricultural and Silvicultural operations and procedures, working to current best practices, legislation, and British Standards.	Essential
Ability to demonstrate fitness and competency in tree climbing using several techniques including ropes and harness, along with a proven track record of being a competent, experienced arborist.	Essential
Literacy and Numeracy to a level to allow plans and maps to be correctly interpreted, work instructions to be followed and work carried out to be recorded in the field and maintain records as appropriate.	Essential

Knowledge, qualifications, skills and experience	Shortlisting criteria
A clear knowledge and understanding of roles and responsibilities within the Health & Safety at Work Act, along with experience of site risk assessment and knowledge of regulations relevant to Arboriculture.	Essential
Hold a full and valid driving licence, to drive appropriate vehicles, and be willing to take and pass the Kirklees Driving Test.	Essential
Hold a full and valid driving licence, ideally including categories B + E or HGV	Desirable
The physical nature of the role requires you to be able to bend, lift, climb and work at heights, so you will be required to undertake a standard medical screening and any other medical screening as determined by the Occupational Health Unit, appropriate to the occupation risk.	Essential
Must be willing and able to take part in standby or call out duties and to work evenings, weekends and during bad weather on a rota basis.	Essential
The role is undertaken outdoors you must be prepared to work in all weather conditions.	Essential

Behaviours and expectations

The right behaviours and attitudes are as important to us as the skills you bring to the job. We expect all our employees to demonstrate the following behaviours:

- Positive
- Honesty
- Respectful
- Flexible
- Communicative
- Supportive

You will also promote and be a role model of the Council's expectations of a New Council Employee within the organisation. This role is at level 1. Find out more about [Council Behaviours and Expectations](#).

General information

See your responsibilities related to [Safeguarding](#).
Able to work unsocial hours.

This Job Profile is intended to provide an understanding and appreciation of the responsibilities of this particular job. It is not possible to specify every detail and we expect you to work flexibly within your skills, knowledge, experience, and grade of this job.

For Office Use Only:

Job Category	Parks & Greenspaces	Grading ID	220
Job ID	80100052	Last Updated	August 2020
Job Focus	No	Career Progression	No

Contractual Variants

DBS Category	No	DBS Type	No
Health Check	Yes	Politically Restricted	No
24/7 working	Yes	Public Holidays	Yes
Night Working	Yes	Alternating Pattern	Yes
Standby	Yes	Other	
Checked by HR	M Lunn		