

# **BYWELL C.E. (C) JUNIOR SCHOOL**



Learning Together – Growing Together

**INFORMATION PACK**  
**2020/2021**





Dear Prospective Candidate,

Thank you for expressing an interest  
in Bywell CE(C) Junior School

This pack will give you a glimpse into the life at our school.

Please also have a look at our website

[www.bywelljuniorschool.co.uk](http://www.bywelljuniorschool.co.uk)

## **Contextual Information**

At Bywell Junior School, we believe that children learn best when they feel valued and respected. We have high expectations of all our children and staff. We aim to work in close collaboration with all our families and the community.



Our vision at Bywell Junior School is:

## **“Learning Together – Growing Together”**

This underpins our vision at Bywell Junior School that all children develop a love of learning in a safe and nurturing environment where inclusion and community are at the heart.

- Which is underpinned by a Christian ethos;
- Which is a positive partnership between staff, pupils and Parents/Carers; sharing mutual respect and trust, where all are valued;
- Which offers a richness of experience where child centred learning is the focus;
- Where all pupils are recognised as gifted and talented and are encouraged to strive for and reach their full potential;
- Where tolerance for every aspect of the community is expected
- Where inspirational teaching leads to excellence of learning.



## VISION STATEMENT

Bywell is an inclusive church school where the Christian ethos encourages us to act with thoughtfulness and humanity. We learn and grow together, aiming high and striving to be the best we can. In our safe and happy environment, all members of the school community are valued and respected.



We have a school in which caring about all things is considered to be of the utmost importance. We care for and value children and we expect those children to grow in their ability to care for and value all that goes on in our school.

The school is a voluntary controlled co-educational Church of England junior school, catering for children in the age range 7 to 11 years. Pupils normally spend four years at the school, progressing from Year 3 through to Year 6, after which they transfer to a High School. The school is organised into four year groups with pupils allocated places in mixed-ability classes according to their age. Within each year group are three classes approximately equal both in size and in range of ability. Each class is taught by a class teacher, with whom the children will spend much of their time. All other subjects are also taught in mixed ability classes, sometimes by a specialist. Class teachers, however, have the responsibility for monitoring the progress of all pupils in their class, and for their pastoral care.



# THE CURRICULUM

We believe that the years between 7 and 11 are among the most important in anyone's life. We, therefore, strive to help every child make the most of those years whilst they are in our school. It is a period in children's lives during which they learn a great deal, not just in academic terms, but about the whole of life. We, therefore, are concerned about the development of the whole child through physical, academic, moral, spiritual and aesthetic development. We are concerned about their behaviour and attitudes, as well as their achievements in school. We believe that manners, respect, truth, honesty and thoughtfulness are all important and we shall seek to help pupils develop these alongside those abilities and talents covered by the curriculum. In all the above areas, we shall expect pupils to strive to reach their highest standards.

Although there are set lessons for some subjects we aim to link subjects. This is sometimes achieved by teaching a topic theme

## English

We encourage all pupils to enjoy speaking and listening, reading and writing. This is a basic skill which we ensure that all children achieve their potential. We follow the National Curriculum for English.

## Maths

We ensure that all children do as well as they can in this subject. We put great emphasis on times tables and using our mathematical knowledge in context. We follow the National Curriculum for Maths.

## Science

We follow the National Curriculum for science which is well supported with other resources. This is a broad curriculum area which covers life processes, materials, physical processes and application of scientific knowledge.

## Computing

We have two class sets of portable laptops and four class sets of iPads. This is taught as set lessons once a week by the class teachers but is also incorporated into other areas of the curriculum.

## Foundation Subjects

We ensure that all children enjoy a broad and rich curriculum which includes History, Geography, Art, Music and RE. We follow the National Curriculum for these subjects.

## PE & Games

All physical activities are considered an important part of the curriculum and are compulsory; all children are expected to participate.

### Swimming

Swimming is part of the curriculum for all pupils in Year 5.

### Personal, Social, Citizenship and Health Education (PSHE)

This is taught in discrete lessons throughout the school by class teachers using PSHE scheme to ensure progression and circle times.

Drugs education is taught to Year 6 pupils. The programme is well established and taught across many Primary schools in Kirklees – Both the Police and School Health are involved in the programme. Issues relating to drugs education are dealt with by class teachers in other year groups at an appropriate level

### Relationship Education

This is taught as part of the school's PSHE education. Matters are dealt with carefully and sensitively, with due consideration being given to the maturity of the pupils. The planned teaching is aimed at helping pupils to cope with the emotional and physical challenges of growing up. A school nurse is involved in the planning and delivery of some of the lessons.

### Religious Education (RE)

We aim to help pupils develop a caring and positive attitude towards themselves and others, and to appreciate and be aware of other cultures and beliefs. We teach respect, appreciation and respect for others. The key beliefs of Christianity, Islam and Judaism are studied Comparisons are made so that similarities and differences are explored.

All children's learning is shared with Parents/Carers on their class pages through the school website which is updated on a weekly basis.

### Collective Worship

This takes place every day, either in individual classes, year groups, or whole school acts of Collective Worship. They are generally Christian in their themes and include music, prayer and a time for reflection. This is a key time of the day when our core values of **Friendship**, **Peace**, **Compassion**, **Justice** and **Peace** are explored and nurtured.





### Extra-Curricular Activities

These are usually centred on sporting, dramatic and musical areas but they are entirely dependent on the interests and goodwill of the teaching staff.

In sport, pupils will be introduced to a variety of competitive activities in which they will be expected to win or lose with good grace. Years Five and Six will have the opportunity to represent the school in competitions against other schools. We take part in league and cup competitions in football, rugby, netball, rounders, cross country, netball, rounders, rugby, and in an inter-school athletics event.

At the moment the extra-curricular activities include football, rugby, netball, rounders, cross country, team-building, dance, archery and choir.

### Special Educational Needs

The school believes that all children are special and all have individual needs. Some children also have specific emotional, behavioural and learning difficulties. These children are supported by the class teacher in the first instance, and then by being taught on occasions in groups, which are smaller than full class size. A small number of children have Education Health Care Plans of special educational needs. Such children are supported in accordance with their individual requirements as stated in their Education Health Care Plan.

### Gifted and Talented

The school believes that all our children are gifted and talented in God's eyes. We will encourage each child to fulfil their potential; in whatever area they excel. We also have an active register of children who display a particular aptitude in a specific area. These could include music, sport, and social skills alongside the obvious curriculum areas.



### Bywell Buddies

We have a strong peer support team called 'Bywell Buddies' which involves between 30 to 40, year 6 pupils who have been trained as play leaders and listening buddies.

They work extremely hard in both playgrounds during every break on a rota system. We are extremely fortunate to have this excellent peer-counselling which is beneficial to all children in our school and promotes tolerance, improved behaviour and also improves the social skills of all the children involved.

### School Council

We have had a School Council for a number of years and encourage them to take an active roll in making Bywell a happy and safe place to be. The School Council has raised money to buy play equipment and furniture to be used outside in the playgrounds.

Each year group elects 4 councillors at the beginning of the academic year and they meet regularly to discuss school issues and developments they can undertake e.g. Improvement of the grounds, playtimes, equipment and school routines

### Play Leaders

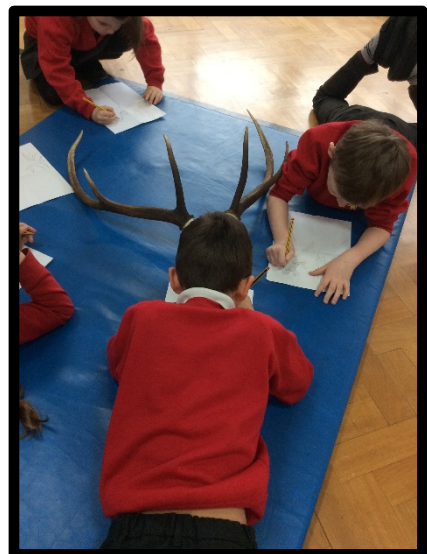
Children are given the opportunity and training to set up and lead a variety of activities during lunch break.

### Pupils in school

We believe all our children are gifted and talented and it is our job to foster and develop these skills in each child.

We encourage the children to be team players in the life of the school and encourage them to develop their self-esteem so that they achieve their potential.

We celebrate their achievements and successes both in and out of school. This takes the form of 'Famous for a Fortnight', 'Smiley Certificates', Hot Spot Winners and 'Always Child'. Their successes in a variety of fields, both in and out of school, are recognised in assemblies on a frequent basis.



## IN CONCLUSION

What has gone before gives only a brief picture of some aspects of our school and various elements that affect it. Its aim is to introduce the school those who are unfamiliar with it.

We **care** about children as people, and about the development of young children's abilities, their attitudes and their behaviour.

We show that we care by the relationships we develop in school and by the environment we create within the building, through its maintenance, its cleanliness and its attractive displays.

Our Christian foundation underpins all that we do. We will foster your children's spirituality through God's teaching in Christianity and of other faiths.

In return, we expect the children to care about the building, about the people in it, and about the standards they themselves achieve in school. We hope that everyone connected with our school community will help us to constantly strive to maintain, and further improve, the high standards that are achieved by all who work in the school.

We hope that this pack will be a source  
of information about the school.  
We hope you find it useful and informative.

